

# WORLD APPEAL

*A touching collection of images that warm the heart.*



## DESK

282 x 145mm  
LANDSCAPE

**Cover:** 200gsm Carbon Capture triple coated silk art paper

**Text:** 13 month leaves 200gsm Carbon Capture triple coated silk art paper printed on both sides

**Branding:** Your details printed on 400gsm white backboard easel

**Branding area:** 260 x 24mm on both sides of the easel

**Binding:** 3-to-the-inch wiro binding

**Packaging:** Packed individually in prestige board postal envelopes

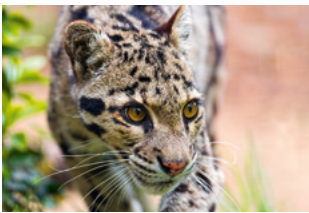




JANUARY



FEBRUARY



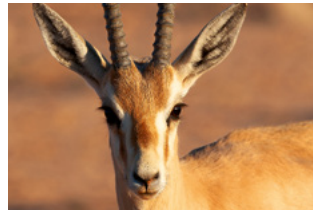
MARCH



APRIL



MAY



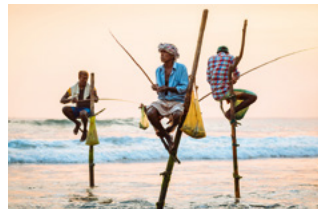
JUNE



JULY



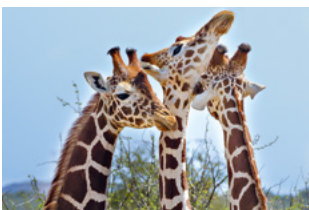
AUGUST



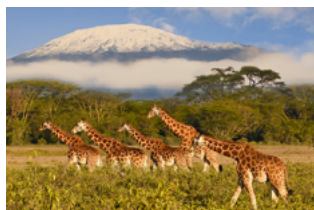
SEPTEMBER



OCTOBER



NOVEMBER



DECEMBER

