



C O L I N P R I O R

E L E M E N T A L S

A C A L E N D A R F O R 2 0 2 5

FROM SCOTLAND'S FOREMOST LANDSCAPE PHOTOGRAPHER

COLIN PRIOR ELEMENTALS



January

2025

wk	1	2	3	4	5
Mon		6	13	20	27
Tue		7	14	21	28
Wed	1	8	15	22	29
Thu	2	9	16	23	30
Fri	3	10	17	24	31
Sat	4	11	18	25	
Sun	5	12	19	26	



Aonach Meadhoin and Sgùrr an Fhuarail and Ciste Dubh, Loch Cluanie, Glen Shiel

The dramatic landscape of Glen Shiel is quintessential of the West Highlands. Magnificent mountain scenery is composed of towering peaks rising steeply from lochs and glens. A feeling of seclusion is engendered by the narrow and winding glen that constrains the view, then suddenly reveals the spear-like cone of Faochag and the pinnacles of the Saddle.

January

2025

1						
		Wed 1	Thu 2	Fri 3	Sat 4	Sun 5
2						
Mon 6	Tue 7	Wed 8	Thu 9	Fri 10	Sat 11	Sun 12
3						
Mon 13	Tue 14	Wed 15	Thu 16	Fri 17	Sat 18	Sun 19
4						
Mon 20	Tue 21	Wed 22	Thu 23	Fri 24	Sat 25	Sun 26
5						
Mon 27	Tue 28	Wed 29	Thu 30	Fri 31		

COLIN PRIOR ELEMENTALS



February 2025

wk	5	6	7	8	9
Mon		3	10	17	24
Tue		4	11	18	25
Wed		5	12	19	26
Thu		6	13	20	27
Fri		7	14	21	28
Sat	1	8	15	22	
Sun	2	9	16	23	



Leirigeo and Eilean Molach, Mangersta, Isle of Lewis

Exposed to huge Atlantic swells that roll in on south-westerlies, the coastline is constantly bombarded with colossal waves that erode the gneiss cliffs into sea caves and arches. White-tailed and golden eagles are regularly seen patrolling the headlands and adjacent mountains, which complements the feeling of wildness.

February

2025

5						Sat 1	Sun 2
6	Mon 3	Tue 4	Wed 5	Thu 6	Fri 7	Sat 8	Sun 9
7	Mon 10	Tue 11	Wed 12	Thu 13	Fri 14	Sat 15	Sun 16
8	Mon 17	Tue 18	Wed 19	Thu 20	Fri 21	Sat 22	Sun 23
9	Mon 24	Tue 25	Wed 26	Thu 27	Fri 28		

COLIN PRIOR ELEMENTALS



March

2025

wk		10	11	12	13
Mon	31	3	10	17	24
Tue		4	11	18	25
Wed		5	12	19	26
Thu		6	13	20	27
Fri		7	14	21	28
Sat	1	8	15	22	29
Sun	2	9	16	23	30



Black Mount, Lochan na h-Achlaise, Rannoch Moor

Lochan na h-Achlaise creates a vast sense of space, and possesses an air of natural calmness and openness. Across the waters from the east shore there are spectacular views to the soaring summits of Black Mount – Stob Ghabhar and, westwards, to Clach Leathad and Meall a' Bhuiridh's western ridge, which connects to Creise in Glen Etive.

March

2025

Mon 31					Sat 1	Sun 2
¹⁰ Mon 3	Tue 4	Wed 5	Thu 6	Fri 7	Sat 8	Sun 9
¹¹ Mon 10	Tue 11	Wed 12	Thu 13	Fri 14	Sat 15	Sun 16
¹² Mon 17	Tue 18	Wed 19	Thu 20	Fri 21	Sat 22	Sun 23
¹³ Mon 24	Tue 25	Wed 26	Thu 27	Fri 28	Sat 29	Sun 30

COLIN PRIOR ELEMENTALS



April

2025

wk	14	15	16	17	18
Mon		7	14	21	28
Tue	1	8	15	22	29
Wed	2	9	16	23	30
Thu	3	10	17	24	
Fri	4	11	18	25	
Sat	5	12	19	26	
Sun	6	13	20	27	



Scarisdale Wood, Knock Estate, Loch na Keal, Isle of Mull

Loch na Keal is the principal sea loch on the Atlantic shore of Mull, whose bayhead beach is backed by meadow and woodland, and above which the south slopes sweep uniformly up to the shapely peak of Ben More. The outer loch has a bold and dynamic coastline of cliffs rising in landslipped tiers, unmasked by tree growth but studded with huge boulders.

April 2025

14						
	Tue 1	Wed 2	Thu 3	Fri 4	Sat 5	Sun 6
15						
Mon 7	Tue 8	Wed 9	Thu 10	Fri 11	Sat 12	Sun 13
16						
Mon 14	Tue 15	Wed 16	Thu 17	Fri 18	Sat 19	Sun 20
17						
Mon 21	Tue 22	Wed 23	Thu 24	Fri 25	Sat 26	Sun 27
18						
Mon 28	Tue 29	Wed 30				

COLIN PRIOR ELEMENTALS



May

2025

wk	18	19	20	21	22
Mon		5	12	19	26
Tue		6	13	20	27
Wed		7	14	21	28
Thu	1	8	15	22	29
Fri	2	9	16	23	30
Sat	3	10	17	24	31
Sun	4	11	18	25	



Eilean Mòr, and Eigg from Druim Nan Carn, Isle of Coll

Lying off the north coast of the Isle of Coll is a small group of islands that include Eilean Mòr, Eag na Maoile and Sùil Ghorm, on which the Cairns of Coll Lighthouse is located. Beyond lie the Small Isles, an archipelago of individual, contrasting islands, each with its own recognisable profile when viewed from afar, and each possessing its own distinct landscape, history and culture.

May 2025

18						
			Thu 1	Fri 2	Sat 3	Sun 4
19						
Mon 5	Tue 6	Wed 7	Thu 8	Fri 9	Sat 10	Sun 11
20						
Mon 12	Tue 13	Wed 14	Thu 15	Fri 16	Sat 17	Sun 18
21						
Mon 19	Tue 20	Wed 21	Thu 22	Fri 23	Sat 24	Sun 25
22						
Mon 26	Tue 27	Wed 28	Thu 29	Fri 30	Sat 31	

COLIN PRIOR ELEMENTALS



June

2025

wk		23	24	25	26
Mon	30	2	9	16	23
Tue		3	10	17	24
Wed		4	11	18	25
Thu		5	12	19	26
Fri		6	13	20	27
Sat		7	14	21	28
Sun	1	8	15	22	29



Garbh-bheinn and Marsco, Glen Sligachan, Isle of Skye

The Cuillin rise up dramatically from the sea, creating formidable, enclosed sea lochs, with the absence of foothills enhancing their vast scale. Many iconic views of Scotland are found here, whether Marsco and Sgùrr nan Gillean soaring above Sligachan, Loch Scavaig and the Cuillin ridge from Elgol, or Bla Bheinn above Torrìn.

June 2025

Mon 30						Sun 1
²³ Mon 2	Tue 3	Wed 4	Thu 5	Fri 6	Sat 7	Sun 8
²⁴ Mon 9	Tue 10	Wed 11	Thu 12	Fri 13	Sat 14	Sun 15
²⁵ Mon 16	Tue 17	Wed 18	Thu 19	Fri 20	Sat 21	Sun 22
²⁶ Mon 23	Tue 24	Wed 25	Thu 26	Fri 27	Sat 28	Sun 29

COLIN PRIOR ELEMENTALS



July

2025

wk	27	28	29	30	31
Mon		7	14	21	28
Tue	1	8	15	22	29
Wed	2	9	16	23	30
Thu	3	10	17	24	31
Fri	4	11	18	25	
Sat	5	12	19	26	
Sun	6	13	20	27	



Horse Island and the Isle of Rùm, Gleann Mhairtein, Isle of Muck

Both the Skye and Rum Cuillin have a similar geological composition of basic gabbro - igneous rocks forming jagged edges, ridges and peaks. However, the Rum Cuillin tend to be more gently sloped and rounded. This wild and largely uninhabited landscape rises up from an equally impressive coastline of cliffs, natural arches and raised beaches, and is a place to experience solitude.

July 2025

27						
	Tue 1	Wed 2	Thu 3	Fri 4	Sat 5	Sun 6
28						
Mon 7	Tue 8	Wed 9	Thu 10	Fri 11	Sat 12	Sun 13
29						
Mon 14	Tue 15	Wed 16	Thu 17	Fri 18	Sat 19	Sun 20
30						
Mon 21	Tue 22	Wed 23	Thu 24	Fri 25	Sat 26	Sun 27
31						
Mon 28	Tue 29	Wed 30	Thu 31			

COLIN PRIOR ELEMENTALS



August

2025

wk	31	32	33	34	35
Mon		4	11	18	25
Tue		5	12	19	26
Wed		6	13	20	27
Thu		7	14	21	28
Fri	1	8	15	22	29
Sat	2	9	16	23	30
Sun	3	10	17	24	31



Ben Nevis, Bidean nam Bian and Ben Starav

Glen Etive is a deep cleft through towering mountains, notably the portal peaks of Buachaille Etive Mòr and Buachaille Etive Beag, and the great slabs of Ben Starav. The River Etive, with its numerous waterfalls, is an important feature of the glen and is visited by many hikers in search of the outstanding scenic experience, and exhilarating challenge.

August

2025

31						
				Fri 1	Sat 2	Sun 3
32						
Mon 4	Tue 5	Wed 6	Thu 7	Fri 8	Sat 9	Sun 10
33						
Mon 11	Tue 12	Wed 13	Thu 14	Fri 15	Sat 16	Sun 17
34						
Mon 18	Tue 19	Wed 20	Thu 21	Fri 22	Sat 23	Sun 24
35						
Mon 25	Tue 26	Wed 27	Thu 28	Fri 29	Sat 30	Sun 31

COLIN PRIOR ELEMENTALS



September 2025

wk	36	37	38	39	40
Mon	1	8	15	22	29
Tue	2	9	16	23	30
Wed	3	10	17	24	
Thu	4	11	18	25	
Fri	5	12	19	26	
Sat	6	13	20	27	
Sun	7	14	21	28	



Garbh Bheinn and Glen Tarbert, Loch Linnhe, Ardgour

This extensive area of the western seaboard possesses richly varied scenery of outstanding quality. The coastline is deeply fragmented with numerous promontories, bays, islands and sea lochs. Inland, there is a backdrop of hills and mountains, while out to sea there is a horizon of spectacular islands. The small settlements are interspersed with lengths of wild, uninhabited coastline.

September

2025

36 Mon 1	Tue 2	Wed 3	Thu 4	Fri 5	Sat 6	Sun 7
37 Mon 8	Tue 9	Wed 10	Thu 11	Fri 12	Sat 13	Sun 14
38 Mon 15	Tue 16	Wed 17	Thu 18	Fri 19	Sat 20	Sun 21
39 Mon 22	Tue 23	Wed 24	Thu 25	Fri 26	Sat 27	Sun 28
40 Mon 29	Tue 30					

COLIN PRIOR ELEMENTALS



October 2025

wk	40	41	42	43	44
Mon		6	13	20	27
Tue		7	14	21	28
Wed	1	8	15	22	29
Thu	2	9	16	23	30
Fri	3	10	17	24	31
Sat	4	11	18	25	
Sun	5	12	19	26	



Loch Leven and the Pap of Glencoe, Glencoe

The journey by road northwards across the open moor of Rannoch Moor, past the sentinel of Buachaille Etive, and down through spectacular Glen Coe to the sea at Loch Leven, is a journey of great contrasts – one of the classic Highland journeys. The mountains, moors and glens are visited by many of those in search of outdoor exhilaration and challenge.

October

2025

40						
		Wed 1	Thu 2	Fri 3	Sat 4	Sun 5
41						
Mon 6	Tue 7	Wed 8	Thu 9	Fri 10	Sat 11	Sun 12
42						
Mon 13	Tue 14	Wed 15	Thu 16	Fri 17	Sat 18	Sun 19
43						
Mon 20	Tue 21	Wed 22	Thu 23	Fri 24	Sat 25	Sun 26
44						
Mon 27	Tue 28	Wed 29	Thu 30	Fri 31		

COLIN PRIOR ELEMENTALS



November 2025

wk	44	45	46	47	48
Mon		3	10	17	24
Tue		4	11	18	25
Wed		5	12	19	26
Thu		6	13	20	27
Fri		7	14	21	28
Sat	1	8	15	22	29
Sun	2	9	16	23	30



Saligo Bay, Rinns of Islay, Isle of Islay

Separated from the rest of the island by Loch Indaal, the Rinns of Islay is formed along a branch of the Great Glen Fault called the Loch Gruinart Fault, the main line that passes just to the north of Colonsay. Backed by machir dunes, Saligo Bay lies on Islay's Atlantic coast, together with several other bays, which include Sanaigmore, Machir and Lossit.

November

2025

44						Sat 1	Sun 2
45	Mon 3	Tue 4	Wed 5	Thu 6	Fri 7	Sat 8	Sun 9
46	Mon 10	Tue 11	Wed 12	Thu 13	Fri 14	Sat 15	Sun 16
47	Mon 17	Tue 18	Wed 19	Thu 20	Fri 21	Sat 22	Sun 23
48	Mon 24	Tue 25	Wed 26	Thu 27	Fri 28	Sat 29	Sun 30

COLIN PRIOR ELEMENTALS



December 2025

wk	49	50	51	52	1
Mon	1	8	15	22	29
Tue	2	9	16	23	30
Wed	3	10	17	24	31
Thu	4	11	18	25	
Fri	5	12	19	26	
Sat	6	13	20	27	
Sun	7	14	21	28	

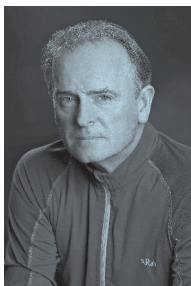


Beinn Dearg Mòr, Fisherfield Forest

The Fisherfield Forest has some of the most challenging and exhilarating mountain walks and climbs in the British Isles. One can walk from Dundonell to Kinlochewe, a distance of over 20 miles and not see an inhabited dwelling, and very few human artefacts. Many mountains appear at first sight impregnable and can only be ascended in a few places.

December 2025

49 Mon 1	Tue 2	Wed 3	Thu 4	Fri 5	Sat 6	Sun 7
50 Mon 8	Tue 9	Wed 10	Thu 11	Fri 12	Sat 13	Sun 14
51 Mon 15	Tue 16	Wed 17	Thu 18	Fri 19	Sat 20	Sun 21
52 Mon 22	Tue 23	Wed 24	Thu 25	Fri 26	Sat 27	Sun 28
1 Mon 29	Tue 30	Wed 31				



In a career spanning forty years, Colin Prior photographs capture sublime moments of light and land, which are the result of meticulous planning and preparation and often take years to achieve. Prior is a photographer who seeks out patterns in the landscape and the hidden links between reality and the imagination. He has produced nine books that include *The World's Wild Places* and *Living Tribes*, which were published internationally, and has just completed a seven-year project in Pakistan's Karakoram Mountains. His most recent project, *Fragile*, explores the links between birds, eggs and their habitats, and was published in September 2020 by Merrell. Colin has been the subject of three BBC documentaries entitled *Mountain Man* and is Patrons Ambassador for the RSPB.

Today, I continue to search for inspiration, and take great pleasure in the landscape paintings of Gordon Beningfield's Countryside. He too, was shaped by a childhood in the countryside and later trained as an ecclesiastical artist, but spent his life painting the countryside of southern England. He wrote: 'I want to capture seasons and moods to such an extent that you can almost smell the subject of the picture, whether it is a portrait of a fox, or a landscape of a

CONTACT: WWW.COLINPRIOR.CO.UK FACEBOOK: WWW.FACEBOOK.COM/COLINPRIORPHOTOGRAPHER TWITTER: [#COLINPRIOR](https://twitter.com/COLINPRIOR) INSTAGRAM: [HTTP://INSTAGRAM.COM/COLINPRIOR](http://INSTAGRAM.COM/COLINPRIOR)

bluebell wood.' His words resonated with me deeply and I recall thinking exactly the same thing when I began to work with large-format cameras. Often, it is not so much about what is in the picture, but where it takes you.

COLIN PRIOR WORKSHOPS

If you are interested in developing your photographic skills, why not join one of Colin's workshops? With trips to Knoydart, Glencoe, Skye, Harris and Assynt, there are numerous opportunities to photograph some of Scotland's wild and iconic landscapes. Our workshops are designed to give photographers access to some of the best photographic locations in Scotland, where knowledge and expertise is communicated at an individual level. Aimed at photographers who are already familiar with their cameras, our workshops offer adventure where learning is complemented with excellent food and accommodation.

ALL PHOTOGRAPHS © COLIN PRIOR



FRAGILE | 2020 | ISBN 978-1-85894-688-7



THE KARAKORAM | 2021 | ISBN 978-1-85894-687-0